



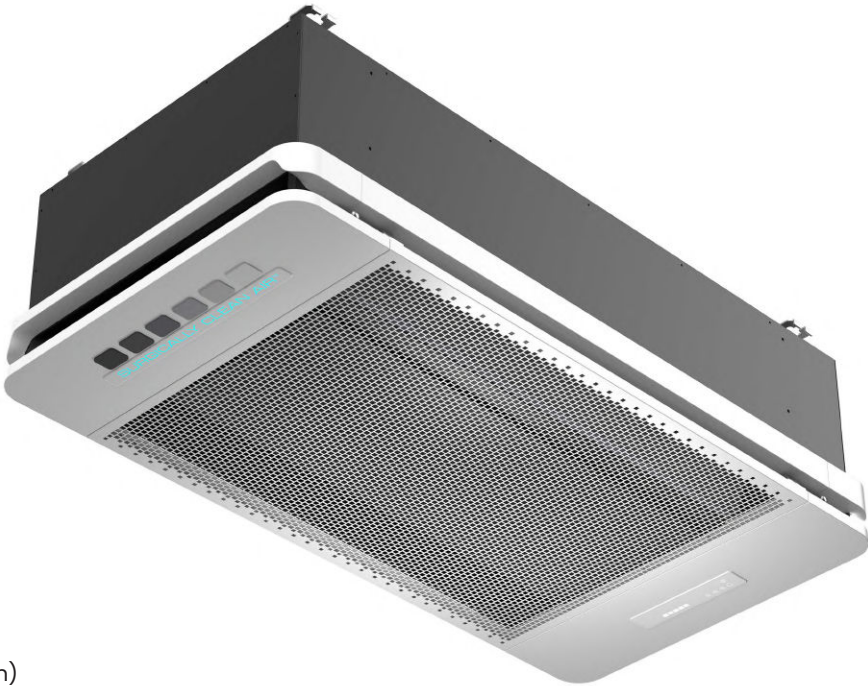
# COBALT 2' x 4' Technical Specifications

### General Description

Manufacturer: Surgically Clean Air Inc.™  
 Model Name: COBALT  
 Model Number: SCA14000-2x4  
 Colours Available: White Front/Black Casing  
 Dimensions (mm): H 360 x W 636 x L 1245  
 Weight (kg): 45

### Features

- Airflow up to 1171 CFM at 51.9 dB\*
- Integrated Pre-filter
- HEPA Filter
- Control Panel
- Automatic Mode
- Remote Control
- Operation Scheduling: 2, 6, 12, 24 hours
- Proximity Sensor (Energy Saving, Smart Operation)
- Three Configurations (Ceiling Mount, Wall Mount, Mobile Stand)



### Electrical Data

Rated Voltage: 120V, 60 Hz, 2.1 A  
 Rated Power: 250 W

### Filtration Media Performance Rating

Rating: H13 (HEPA)

### Warranty

Surgically Clean Air™ will either repair or replace any defective or malfunctioning unit at no cost to the client for a 3-year period.

### Performance Data

Speed	Airflow Cubic Feet Per Minute (CFM)	Power (W) @120V Input	Sound Level*
Low	495	25.6	30.6 dB
Medium	710	58.3	39.7 dB
High	1057	166.2	49.3 dB
Turbo	1171	231.5	51.9 dB

\*Measured at 1 m from the unit.

### Certifications



**SALES ENQUIRIES** sales@surgicallycleanair.com  
**CLIENT ENQUIRIES** customercare@surgicallycleanair.com

**HEAD OFFICE**  
 1A-6300 Viscount Rd. Toronto, Ontario, Canada L4V 1H3 | 1.877.440.7770

